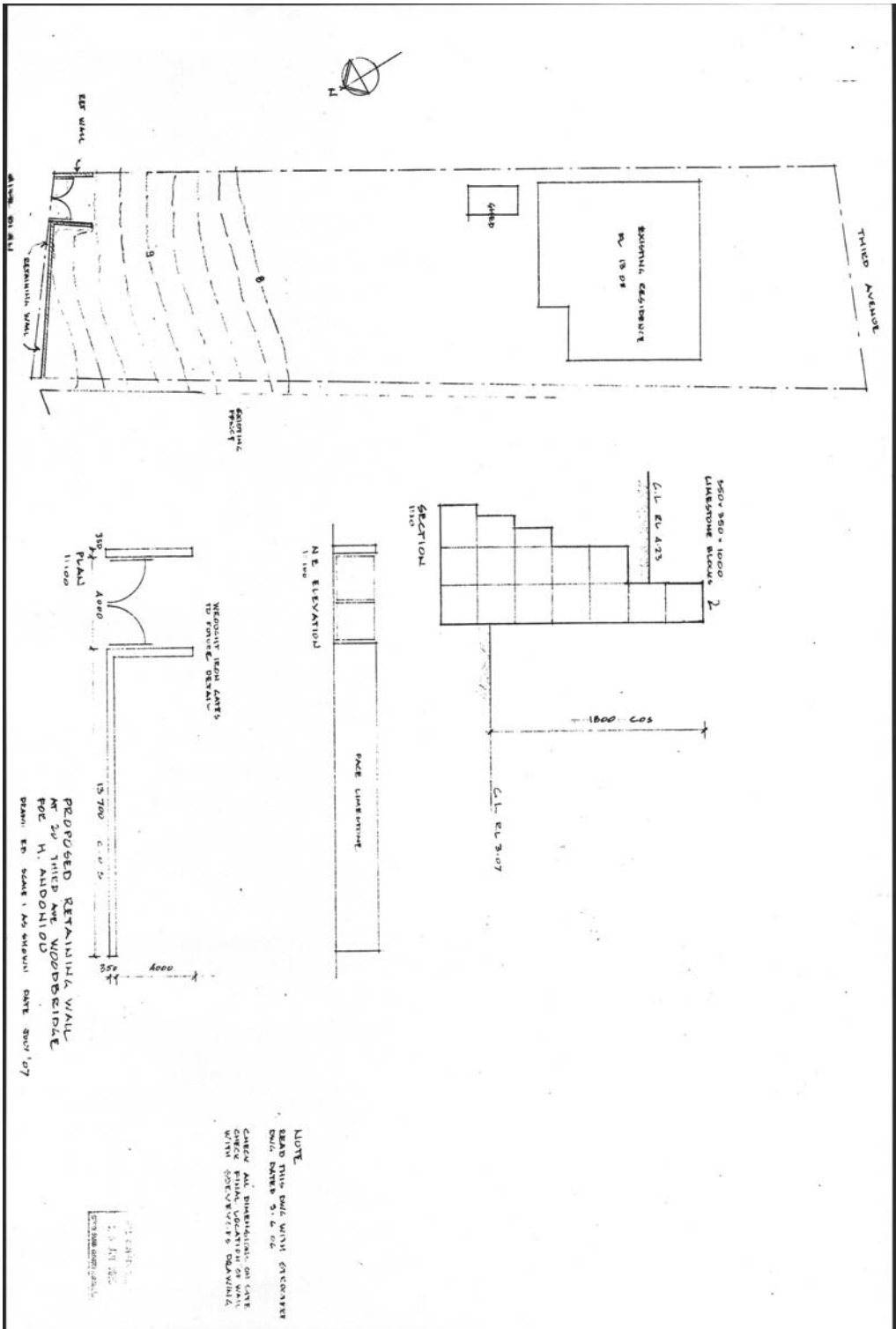


DISCLAIMER: Information shown hereon is a composite of information from various different data sources. Users are warned that the information is provided by the City of Swan in this format as a general resource on the understanding that it is not suitable as a basis for decision making without verification with the original source.

Enter
your note
here



1:2205
Tuesday,
October 10,
2006



THIRD AVENUE

REPAIRS TO EXISTING

REMOVED RETAINING WALL
AT 3rd THIRD AND WOODSIDE
FOR H. ANDONID
SCALE: AS SHOWN DATE NOV' 07

NOTE
READ THIS PLAN WITH OVERLAY
MAP NUMBER 2, E. 112
CHECK ALL DIMENSIONS ON SITE
CHECK FINAL LOCATION OF WALL
WITH SURVEYOR'S BOUNDARY

1/8" = 1'-0"

DATE: 11/07

SCALE: AS SHOWN

DATE: NOV' 07

15700

4000

1800 C.O.S.

EL 307

EL 433

150' x 350' - 1000'

LINESTONE BLOCK 2

SECTION

FACE LINESTONE

NE ELEVATION

1/8" = 1'-0"

15700

4000

1800 C.O.S.

EL 307

EL 433

150' x 350' - 1000'

LINESTONE BLOCK 2

SECTION

FACE LINESTONE

NE ELEVATION

1/8" = 1'-0"

15700

4000

1800 C.O.S.

EL 307

EL 433

150' x 350' - 1000'

LINESTONE BLOCK 2

SECTION

FACE LINESTONE

NE ELEVATION

1/8" = 1'-0"

15700

4000

1800 C.O.S.

EL 307

EL 433

150' x 350' - 1000'

LINESTONE BLOCK 2

SECTION

FACE LINESTONE

NE ELEVATION

1/8" = 1'-0"

15700

4000

1800 C.O.S.

EL 307

EL 433

150' x 350' - 1000'

LINESTONE BLOCK 2

SECTION

FACE LINESTONE

NE ELEVATION

1/8" = 1'-0"

15700

4000

1800 C.O.S.

EL 307

EL 433

150' x 350' - 1000'

LINESTONE BLOCK 2

SECTION

FACE LINESTONE

NE ELEVATION

1/8" = 1'-0"

15700

4000

1800 C.O.S.

EL 307

EL 433

150' x 350' - 1000'

LINESTONE BLOCK 2

SECTION

FACE LINESTONE

NE ELEVATION

1/8" = 1'-0"

15700

4000

1800 C.O.S.

EL 307

EL 433

150' x 350' - 1000'

LINESTONE BLOCK 2

SECTION

FACE LINESTONE

NE ELEVATION

1/8" = 1'-0"

15700

4000

1800 C.O.S.

EL 307

EL 433

150' x 350' - 1000'

LINESTONE BLOCK 2

SECTION

FACE LINESTONE

NE ELEVATION

1/8" = 1'-0"

15700

4000

1800 C.O.S.

EL 307

EL 433

150' x 350' - 1000'

LINESTONE BLOCK 2

SECTION

FACE LINESTONE

NE ELEVATION

1/8" = 1'-0"

15700

4000

1800 C.O.S.

EL 307

EL 433

150' x 350' - 1000'

LINESTONE BLOCK 2

SECTION

FACE LINESTONE

NE ELEVATION

1/8" = 1'-0"

15700

4000

1800 C.O.S.

EL 307

EL 433

150' x 350' - 1000'

LINESTONE BLOCK 2

SECTION

FACE LINESTONE

NE ELEVATION

1/8" = 1'-0"

15700

4000

1800 C.O.S.

EL 307

EL 433

150' x 350' - 1000'

LINESTONE BLOCK 2

SECTION

FACE LINESTONE

NE ELEVATION

1/8" = 1'-0"

15700

4000

1800 C.O.S.

EL 307

EL 433

150' x 350' - 1000'

LINESTONE BLOCK 2

SECTION

FACE LINESTONE

NE ELEVATION

1/8" = 1'-0"

15700

4000

1800 C.O.S.

EL 307

EL 433

150' x 350' - 1000'

LINESTONE BLOCK 2

SECTION

FACE LINESTONE

NE ELEVATION

1/8" = 1'-0"

15700

4000

1800 C.O.S.

EL 307

EL 433

150' x 350' - 1000'

LINESTONE BLOCK 2

SECTION

FACE LINESTONE

NE ELEVATION

1/8" = 1'-0"

15700

4000

1800 C.O.S.

EL 307

EL 433

150' x 350' - 1000'